

C A B I N E T S
B Y **hayley**



2019 CATALOGUE **HC SERIES**

hayley

In 1978, Hayley Industrial Electronics Ltd. was founded to produce high powered uninterruptible power supply (UPS) units for heavy duty applications such as the oil patch and in manufacturing plants. Over time, Hayley became well known for our high quality UPS systems. The power units Hayley supplied for industrial applications were housed in exceptionally strong metal storage cabinets, designed to withstand harsh environments and physical abuses. Products that can't hold up in the field won't be used for very long, and it is this belief that drove Hayley to ensure that their products were durable and long-lasting. It was this core belief that has made Hayley the first choice for industrial UPS units for over 40 years.



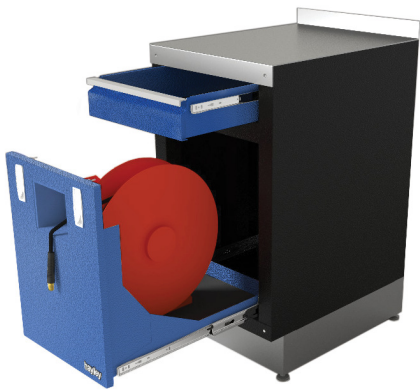
Customers that were familiar with the high quality of Hayley's UPS system cabinets asked if they could order custom cabinets from Hayley. Nothing in the market could compare to the same high standards and quality as they had experienced in the field with our UPS System cabinets. Soon, Hayley began experimenting with various sizes and designs and after about a year of testing, Hayley formed Cabinets by Hayley to service the residential, commercial, and industrial markets.

Now, Cabinets by Hayley offer a full line of metal storage cabinets for the people that want the best in quality and appearance for their storage needs. These simply are the best made cabinets you can purchase.

MORE THAN STORAGE. IT'S AN INVESTMENT

DURABLE FINISH

All cabinets are powder coated with a durable textured finish that resists fingerprints and scuffing.



STRENGTH

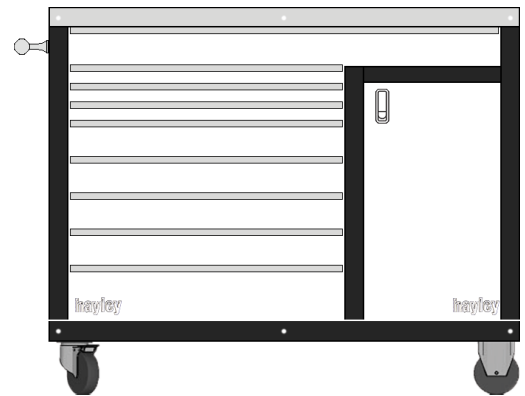
Our Cabinets are manufactured using 16 gauge high quality Canadian steel for a solid feel and ultimate durability that will last a lifetime.

FLEXIBILITY

All of our cabinets are modular in design and are available in a variety of heights, widths, and depths enabling designs to create functional spaces.

DESIGN

Strength and beauty go hand in hand with double sided doors and brushed aluminum accents providing a spectacular appearance and superior performance.



NORTH AMERICAN MADE

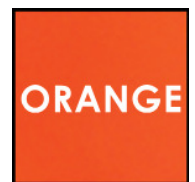
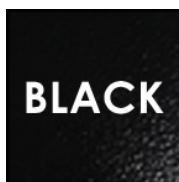
Proudly designed, fabricated, powder coated, and assembled in North America. You can be assured that our quality products will stand the test of time.

VERSATILE

We have two lines of cabinets and a variety of specialty products to utilize your available space efficiently.

COLORS

We offer nine popular colour options. All of our cabinets are powder coated to create a scratch resistant and easy to clean surface for years of maintenance free service.



*Optional colours available upon request

COUNTERTOP MATERIAL

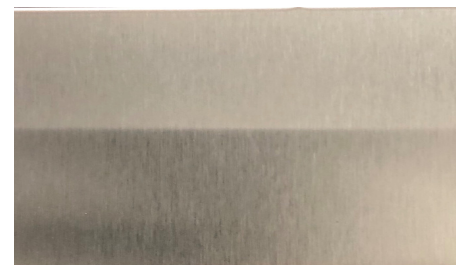
Your choice of galvanized 12g steel, powder coated 12g steel, or 16g stainless steel countertops can be installed on your cabinet set.



Galvanized 12g Steel



Powder Coated 12g Steel



16g Stainless Steel

C A B I N E T S
B Y **hayley**



HC
SERIES

HC SERIES PREMIUM GARAGE CABINETS



- 100% modular for expandability
- Built-In or Free-Standing options
- Constructed from 16GA steel
- Durable double-sided doors
- Stainless steel full-length hinges
- Chrome or black latches; lock or non-lock
- 130lb full extension ball bearing slides
- Height adjustable shelves
- Adjustable base-channel or free-standing legs
- Fully integrated lighting and switch
- Durable textured powder coated finish
- Available in nine standard colors
- Custom colors available
- Integrated power and USB options
- Counter and backsplash options



19" UPPER SINGLE DOOR

PART #	HEIGHT	WIDTH	DEPTH	WEIGHT
<i>HC 181914</i>	18"	19"	14"	35LBS
<i>HC 241914</i>	24"	19"	14"	40LBS
<i>HC 301914 U</i>	30"	19"	14"	50LBS

<i>HC 181924</i>	18"	19"	24.5"	50LBS
<i>HC 241924</i>	24"	19"	24.5"	65LBS
<i>HC 301924 U</i>	30"	19"	24.5"	70LBS



28" UPPER STANDARD

PART #	HEIGHT	WIDTH	DEPTH	WEIGHT
<i>HC 182814</i>	18"	28"	14"	50LBS
<i>HC 242814</i>	24"	28"	14"	70LBS
<i>HC 302814 U</i>	30"	28"	14"	85LBS

<i>HC 182824</i>	18"	28"	24.5"	90LBS
<i>HC 242824</i>	24"	28"	24.5"	125LBS
<i>HC 302824 U</i>	30"	28"	24.5"	140LBS



34" UPPER STANDARD

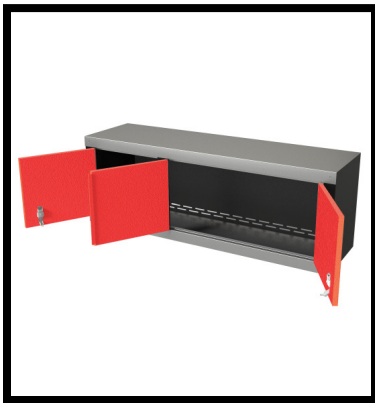
PART #	HEIGHT	WIDTH	DEPTH	WEIGHT
<i>HC 183414</i>	18"	34"	14"	55LBS
<i>HC 243414</i>	24"	34"	14"	75LBS
<i>HC 303414 U</i>	30"	34"	14"	90LBS

<i>HC 183424</i>	18"	34"	24.5"	95LBS
<i>HC 243424</i>	24"	34"	24.5"	130LBS
<i>HC 303424 U</i>	30"	34"	24.5"	155LBS



48" UPPER DOUBLE DOOR

PART #	HEIGHT	WIDTH	DEPTH	WEIGHT
<i>HC 184814</i>	18"	48"	14"	80LBS
<i>HC 244814</i>	24"	48"	14"	110LBS
<i>HC 304814 U</i>	30"	48"	14"	150LBS
<i>HC 184824</i>	18"	48"	24.5"	110LBS
<i>HC 244824</i>	24"	48"	24.5"	190LBS
<i>HC 304824 U</i>	30"	48"	24.5"	240LBS



51" UPPER TRIPLE DOOR

PART #	HEIGHT	WIDTH	DEPTH	WEIGHT
<i>HC 185114</i>	18"	51"	14"	90LBS
<i>HC 245114</i>	24"	51"	14"	120LBS
<i>HC 305114 U</i>	30"	51"	14"	150LBS
<i>HC 185124</i>	18"	51"	24.5"	120LBS
<i>HC 245124</i>	24"	51"	24.5"	150LBS
<i>HC 305124 U</i>	30"	51"	24.5"	180LBS



19" LOWER STANDARD

PART #	HEIGHT	WIDTH	DEPTH	WEIGHT
<i>HC 301924*</i>	30"	19"	24.5"	75LBS

*Base channel and countertop not included.
Cabinet available in left and right hand door swing.



19" LOWER SINGLE DRAWER

PART #	HEIGHT	WIDTH	DEPTH	WEIGHT
<i>HC 301924 D1*</i>	30"	19"	24.5"	95LBS

*Base channel and countertop not included.
Cabinet available in left and right hand door swing.



19" LOWER DOUBLE DRAWER

PART #	HEIGHT	WIDTH	DEPTH	WEIGHT
<i>HC 301924 D2*</i>	30"	19"	24.5"	125LBS

*Base channel and countertop not included.
Cabinet available in left and right hand door swing.



28" LOWER STANDARD

PART #	HEIGHT	WIDTH	DEPTH	WEIGHT
HC 302824*	30"	28"	24.5"	120LBS

*Base channel and countertop not included.



28" LOWER SINGLE DRAWER

PART #	HEIGHT	WIDTH	DEPTH	WEIGHT
HC 302824 D1*	30"	28"	24.5"	150LBS

*Base channel and countertop not included.



28" LOWER DOUBLE DRAWER

PART #	HEIGHT	WIDTH	DEPTH	WEIGHT
HC 302824 D2*	30"	28"	24.5"	160LBS

*Base channel and countertop not included.



34" LOWER STANDARD

PART #	HEIGHT	WIDTH	DEPTH	WEIGHT
HC 303424*	30"	34"	24.5"	125LBS

*Base channel and countertop not included.



34" LOWER SINGLE DRAWER

PART #	HEIGHT	WIDTH	DEPTH	WEIGHT
HC 303424 D1*	30"	34"	24.5"	155LBS

*Base channel and countertop not included.



34" LOWER DOUBLE DRAWER

PART #	HEIGHT	WIDTH	DEPTH	WEIGHT
HC 303424 D2*	30"	34"	24.5"	165LBS

*Base channel and countertop not included.

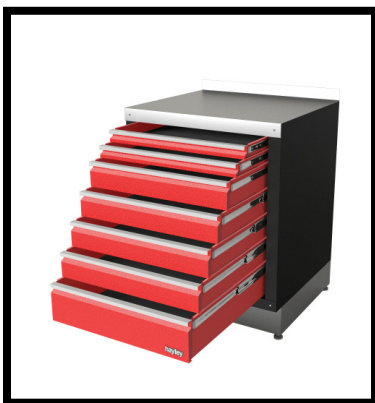


19" TOOL CHEST

PART #	HEIGHT	WIDTH	DEPTH	WEIGHT
HC 301924 D6*	30"	19"	24.5"	225LBS

*Base channel and countertop not included.

*Six Drawer Configuration: 2x2" ~ 3x4" ~ 1x10"

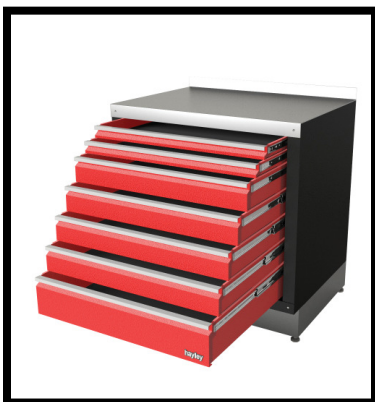


28" TOOL CHEST

PART #	HEIGHT	WIDTH	DEPTH	WEIGHT
HC 302824 D7*	30"	28"	24.5"	250LBS

*Base channel and countertop not included.

*Seven Drawer Configuration: 2x2" ~ 4x4" ~ 1x6"

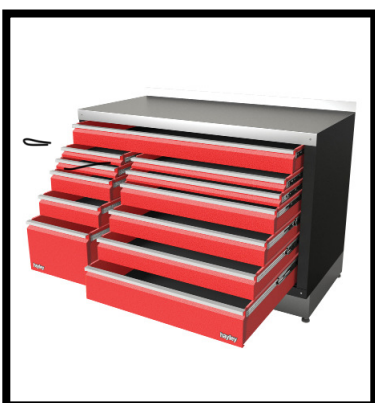


34" TOOL CHEST

PART #	HEIGHT	WIDTH	DEPTH	WEIGHT
HC 303424 D7*	30"	34"	24.5"	260LBS

*Base channel and countertop not included.

*Seven Drawer Configuration: 2x2" ~ 4x4" ~ 1x6"



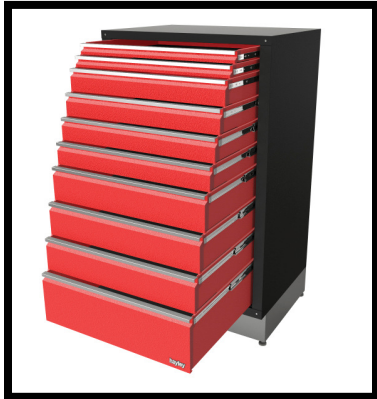
51" TOOL CHEST

PART #	HEIGHT	WIDTH	DEPTH	WEIGHT
HC 305124 D12*	30"	51"	24.5"	420LBS
HC 365124 D16**	36"	51"	24.5"	600LBS

*Base channel and countertop not included.

*Twelve Drawer Configuration: TOP: 1x4"
LEFT: 2x2" ~ 2x4" ~ 1x10" RIGHT: 2x2" ~ 3x4" ~ 1x6"

**Sixteen Drawer Configuration: TOP: 1x4"
LEFT: 3x2" ~ 3x4" ~ 1x10" RIGHT: 3x2" ~ 4x4" ~ 1x6"



51" TALL TOOL CHEST

PART #	HEIGHT	WIDTH	DEPTH	WEIGHT
HC 513424 D10✕	51"	34"	24.5"	390LBS

*Base channel and countertop not included.

✕Ten Drawer Configuration: 2x2" ~ 4x4" ~ 3x6" ~ 1x10"



19" SINGLE DRAWER GARBAGE BIN

PART #	HEIGHT	WIDTH	DEPTH	WEIGHT
<i>HC 301924 GB</i>	30"	19"	24.5"	95LBS

*Base channel and countertop not included.

*Comes with: 2- black garbage bins



19" SINGLE DRAWER PARTS BIN

PART #	HEIGHT	WIDTH	DEPTH	WEIGHT
<i>HC 301924 PB</i>	30"	19"	24.5"	125LBS

*Base channel and countertop not included.

*Comes with: 20- Small poly bins (5")

20- Large poly bins (7")



19" SINGLE DRAWER HOSE REEL

PART #	HEIGHT	WIDTH	DEPTH	WEIGHT
<i>HC 301924 HR</i>	30"	19"	24.5"	130LBS
<i>HC 301924 HRHD</i>	30"	19"	24.5"	140LBS

*Base channel and countertop not included.



19" SINGLE DRAWER POWER REEL

PART #	HEIGHT	WIDTH	DEPTH	WEIGHT
<i>HC 301924 PRHD</i>	30"	19"	24.5"	150LBS

*Base channel and countertop not included.



28" SINGLE DRAWER HOSE AND POWER REEL

PART #	HEIGHT	WIDTH	DEPTH	WEIGHT
<i>HC 301924 HPRHD</i>	30"	19"	24.5"	225LBS

*Base channel and countertop not included.



68" MOTORIZED TV CABINET

PART #	HEIGHT	WIDTH	DEPTH	WEIGHT
<i>HC 306810 TV</i>	30"	68"	10"	350LBS

*Base channel and countertop not included.



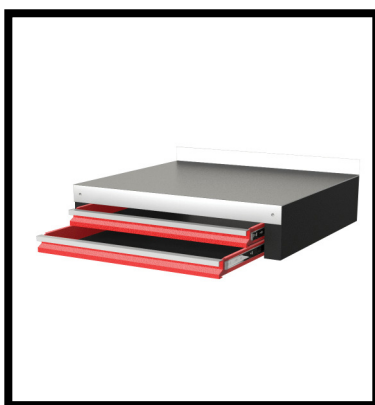
28" LOWER UTILITY CABINET

PART #	HEIGHT	WIDTH	DEPTH	WEIGHT
<i>HC 362824 FS</i>	36"	28"	24.5"	95LBS
<i>HC 362824 FSD</i>	36"	28"	24.5"	105LBS

*Countertop not included.

**FS: free-standing (no door included)

***FSD: free-standing with door (door included)



KNEE SPACE DRAWER

PART #	HEIGHT	WIDTH	DEPTH	WEIGHT
<i>HC 62824 D1</i>	6"	28"	24.5"	50LBS
<i>HC 62824 D2</i>	6"	28"	24.5"	60LBS
<i>HC 63424 D1</i>	6"	34"	24.5"	50LBS
<i>HC 63424 D2</i>	6"	34"	24.5"	60LBS

*Countertop not included.



UPPER CORNER

PART #	HEIGHT	WIDTH	DEPTH	WEIGHT
<i>HC 182424</i>	18"	24.5"	24.5"	75LBS
<i>HC 242424</i>	24"	24.5"	24.5"	90LBS
<i>HC 302424</i>	30"	24.5"	24.5"	110LBS



UPPER CORNER DOUBLE DOOR

PART #	HEIGHT	WIDTH	DEPTH	WEIGHT
<i>HC 243737</i>	24"	37.25"	37.25"	240LBS



LOWER CORNER CABINET

PART #	HEIGHT	WIDTH	DEPTH	WEIGHT
<i>HC 303737</i>	30"	37.25"	37.25"	300LBS

*Base channel and countertop not included.



OPEN CORNER DOOR BRACKET KIT

PART #	HEIGHT	WIDTH	DEPTH	WEIGHT
<i>HC 362824 OC</i>	36"	28"	24.5"	175LBS

- *Countertop not included
- *Hinged side must be beside the corner.
- *Countertop that covers the cabinet must run into the corner.
- *Some assembly required

52" BLIND CORNER LOWER



PART #	HEIGHT	WIDTH	DEPTH	WEIGHT
<i>HC 305224 BCL</i>	30"	52.5"	24.5"	190LBS
<i>HC 305224 BCR</i>	30"	52.5"	24.5"	190LBS

- *Base channel and countertop not included.
- *Blind Corner Left: Shown
- *Blind Corner Right: Optional

58" BLIND CORNER LOWER



PART #	HEIGHT	WIDTH	DEPTH	WEIGHT
<i>HC 305824 BCL</i>	30"	58.5"	24.5"	215LBS
<i>HC 305824 BCR</i>	30"	58.5"	24.5"	215LBS

- *Base channel and countertop not included.
- *Blind Corner Left: Shown
- *Blind Corner Right: Optional

52" BLIND CORNER CLOSET



PART #	HEIGHT	WIDTH	DEPTH	WEIGHT
<i>HC 755224 BCL</i>	75"	52.5"	24.5"	475LBS
<i>HC 755224 BCR</i>	75"	52.5"	24.5"	475LBS

- *Base channel and not included.
- *Blind Corner Left: Shown
- *Blind Corner Right: Optional

58" BLIND CORNER CLOSET



PART #	HEIGHT	WIDTH	DEPTH	WEIGHT
<i>HC 755824 BCL</i>	75"	58.5"	24.5"	530LBS
<i>HC 755824 BCR</i>	75"	58.5"	24.5"	530LBS

- *Base channel and not included.
- *Blind Corner Left: Shown
- *Blind Corner Right: Optional



19" CLOSET

PART #	HEIGHT	WIDTH	DEPTH	WEIGHT
HC 751914	75"	19"	14"	180LBS
HC 751924	75"	19"	24.5"	230LBS

*Base channel not included.



28" CLOSET

PART #	HEIGHT	WIDTH	DEPTH	WEIGHT
HC 752814	75"	28"	14"	200LBS
HC 752824	75"	28"	24.5"	250LBS

*Base channel not included.



34" CLOSET

PART #	HEIGHT	WIDTH	DEPTH	WEIGHT
HC 753414	75"	34"	14"	210LBS
HC 753424	75"	34"	24.5"	260LBS

*Base channel not included.



DOUBLE DOOR CLOSETS

PART #	HEIGHT	WIDTH	DEPTH	WEIGHT
HC 754814	75"	48"	14"	290LBS
HC 754824	75"	48"	24.5"	340LBS
HC 755414	75"	54"	14"	340LBS
HC 755424	75"	54"	24.5"	390LBS
HC 756614	75"	66"	14"	475LBS
HC 756624	75"	66"	24.5"	525LBS

*Base channel not included.

CABINETS HC STANDARD ROLLING CABINETS



ROLLING TWELVE DRAWER CABINET

PART #	HEIGHT	WIDTH	DEPTH	WEIGHT
HC 305124 D12*	30"	51"	24.5"	470LBS

*Price includes casters and handle. Counter not included.

*Twelve Drawer Configuration: TOP: 1x4"
LEFT: 2x2" ~ 2x4" ~ 1x10" RIGHT: 2x2" ~ 3x4" ~ 1x6"



ROLLING NINE DRAWER CABINET

PART #	HEIGHT	WIDTH	DEPTH	WEIGHT
HC 365124 D9*	36"	51"	24.5"	390LBS

*Price includes casters and handle. Counter not included.

*Nine Drawer Configuration: TOP: 1x4"
LEFT: cabinet RIGHT: 3x2" ~ 4x4" ~ 1x6"



ROLLING SIXTEEN DRAWER CABINET

PART #	HEIGHT	WIDTH	DEPTH	WEIGHT
HC 365124 D16*	36"	51"	24.5"	650LBS

*Price includes casters and handle. Counter not included.

*Sixteen Drawer Configuration: TOP: 1x4"
LEFT: 3x2" ~ 3x4" ~ 1x10" RIGHT: 3x2" ~ 4x4" ~ 1x6"



TOOL CART

PART #	HEIGHT	WIDTH	DEPTH	WEIGHT
TC 363424 D1	36"	34"	24.5"	125LBS
TC 363424 D2	36"	34"	24.5"	135LBS

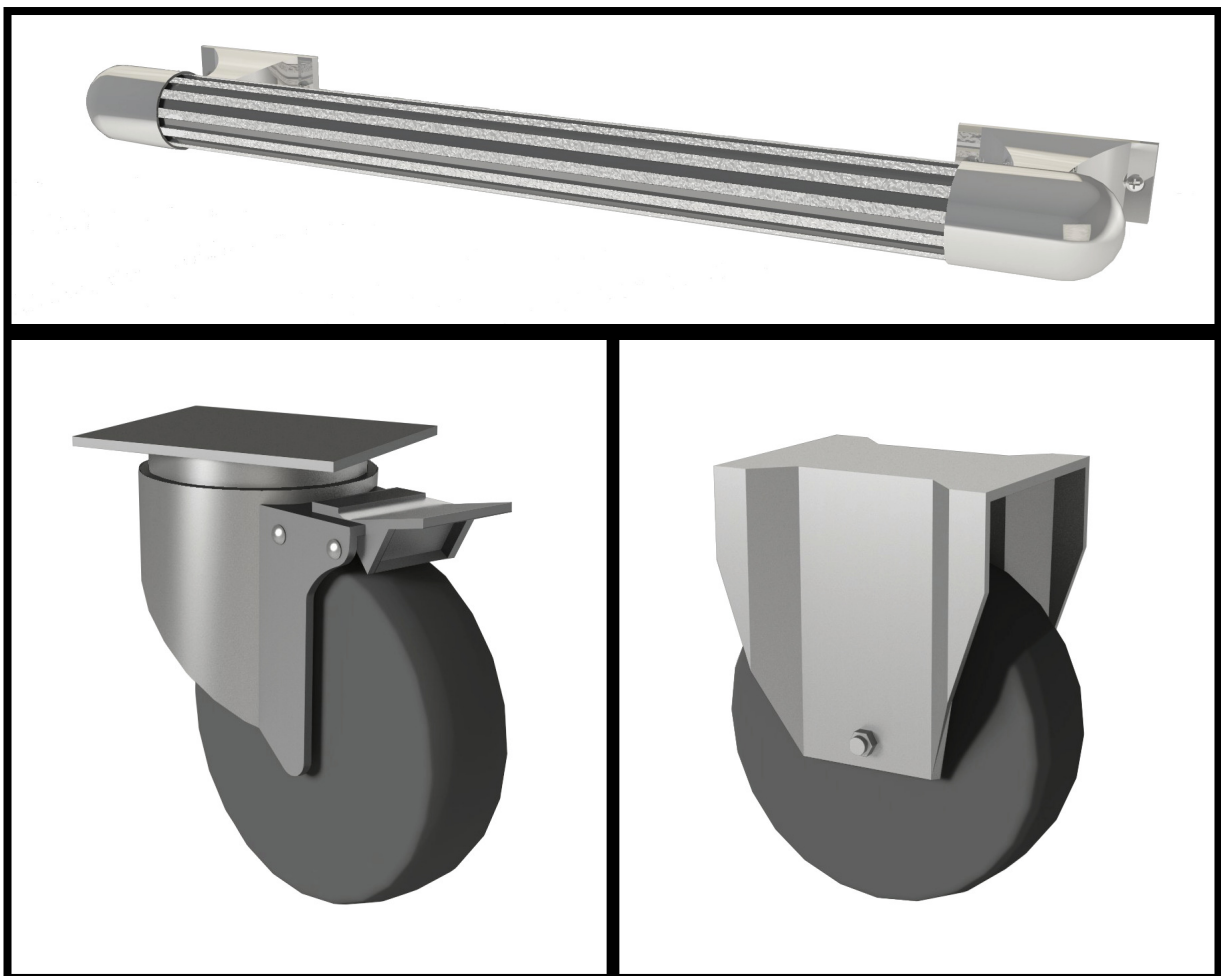
*Price includes:

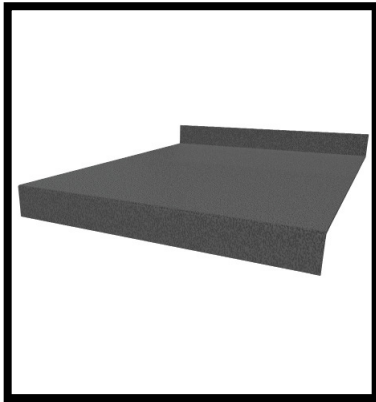
- Casters
- Hayley Tool Rack
- Hayley Screwdriver Rack
- Counter not required

Turn any HC lower into a rolling cabinet by adding four heavy duty castors and a handle.



We provide chrome pull handles and two swivel and two rigid castors. Each castor is capable of supporting 300lbs and each base is made to order, with holes spaced to perfectly balance the unit on the castors.





COUNTER TOPS

PART #	HEIGHT	WIDTH	DEPTH	WEIGHT
<i>HC 098 GA</i>	2 5/8" Lip	/foot	24.5"	12.5LBS
<i>HC 098 PC</i>	2 5/8" Lip	/foot	24.5"	12.5LBS
<i>HC 098 SS</i>	2 5/8" Lip	/foot	24.5"	18LBS

*Price per linear foot.

GA: galvanized steel with plywood

PC: powder coated with plywood

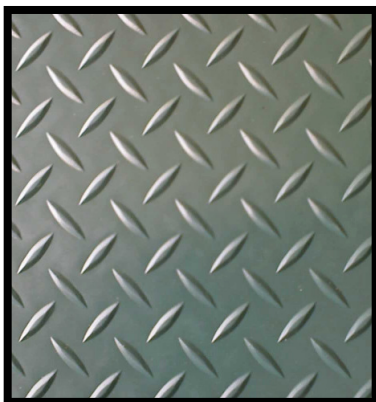
SS: stainless steel with plywood



6" BASE CHANNEL

PART #	HEIGHT	WIDTH	DEPTH	WEIGHT
<i>HC 049</i>	6"	/foot	22"	9LBS

*Price per linear foot.



ALUMINUM CHECKER PLATE BACKSPLASHES & TOE KICK COVERS

PART #	HEIGHT	WIDTH	DEPTH	WEIGHT
<i>CP 24</i>	24" or less	/foot	1/8"	2LBS
<i>CP 48</i>	24" or more	/foot	1/8"	4LBS
<i>HC TKC</i>	6"	/foot	16 G	1LBS

*Price per linear foot.

* Max length is 10'



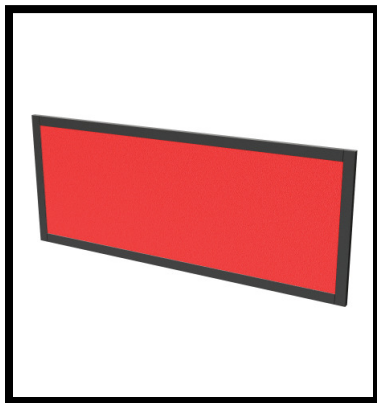
LIGHTING

PART #	HEIGHT	WIDTH	DEPTH	WEIGHT
<i>HC LED</i>	3/8"	/foot	5/16"	1Lbs
<i>HC LED TX</i>				1LBS
<i>HC LED TXHD</i>				1LBS

*Price per linear foot.

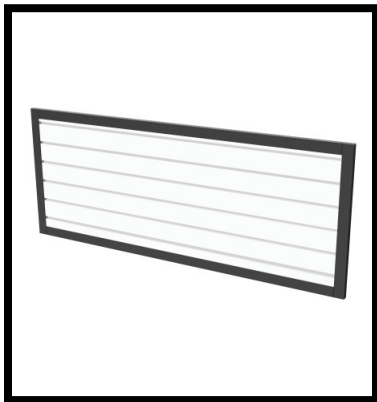
*Max 18' of linear cabinets

*TXHD used for continuous use applications



FREE-STANDING BACKSPLASH

PART #	HEIGHT	WIDTH	DEPTH	WEIGHT
<i>HC FSBS 21 PC</i>	20.75"	MAX 56"	0.75"	30LBS
<i>HC FSBS 21 CP</i>	20.75"	MAX 56"	0.75"	30LBS
<i>HC FSBS 21 CP PC</i>	20.75"	MAX 56"	0.75"	30LBS
<i>HC FSBS 21 HW</i>	20.75"	MAX 56"	0.75"	30LBS
<i>HC FSBS 21 SS</i>	20.75"	MAX 56"	0.75"	40LBS
<i>HC FSBS 21 BL</i>	20.75"	MAX 56"	0.75"	30LBS
<i>HC FSBS 27 PC</i>	26.75"	MAX 56"	0.75"	35LBS
<i>HC FSBS 27 CP</i>	26.75"	MAX 56"	0.75"	35LBS
<i>HC FSBS 27 CP PC</i>	26.75"	MAX 56"	0.75"	35LBS
<i>HC FSBS 27 HW</i>	26.75"	MAX 56"	0.75"	35LBS
<i>HC FSBS 27 SS</i>	26.75"	MAX 56"	0.75"	45LBS
<i>HC FSBS 27 BL</i>	26.75"	MAX 56"	0.75"	35LBS



*PC: Powder coated

*CP: Checker plate

*CP PC: Powder coated checker plate

*HW: Slatwall

*SS: Stainless steel

*BL: Backlit



FREE-STANDING PILLAR

PART #	Power	Height	Width	Depth	WEIGHT
<i>HC FSP 21</i>	no	20.75"	8"	8"	10LBS
<i>HC FSP 27</i>	no	26.75"	8"	8"	20LBS
<i>2P*</i>	yes*				5LBS
<i>3P*</i>	yes*				5LBS

Optional Pillar Power Upgrade.

* 2P: Two outlets with convenience

* 3P: Three outlets with two USB and convenience



6" FREE-STANDING LEGS, EACH

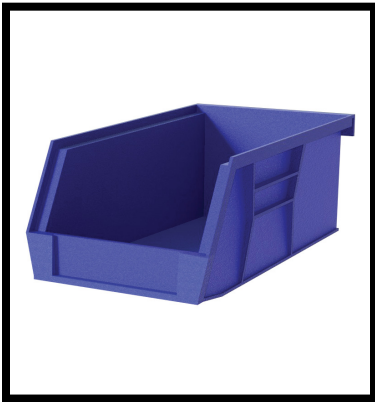
PART #	HEIGHT	WIDTH	DEPTH	WEIGHT
<i>HC FSL 24</i>	6"	2"	24.5"	15LBS



LATCHES

PART #	Color	Lockable
<i>Chrome Non-Lock</i>	Zinc	No
<i>Chrome Lock</i>	Zinc	Yes
<i>Black Non-Lock</i>	Flat Black	No
<i>Black Lock</i>	Flat Black	Yes

*Price upgrade per latch.

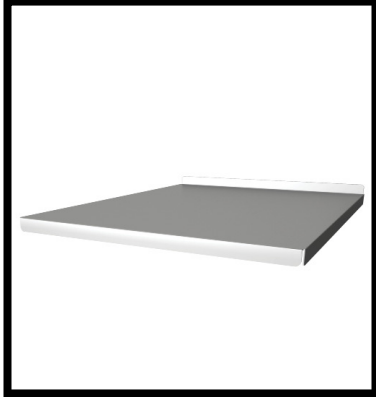


BINS

PART #	HEIGHT	WIDTH	DEPTH	WEIGHT
<i>Small Poly Bin</i>	2.75"	4"	5"	0.1 LBS
<i>Large Poly Bin</i>	2.75"	4"	7"	0.1 LBS

Bins fit in a 4" tall drawer and priced individually.

SHELVES



PART #	HEIGHT	WIDTH	DEPTH	WEIGHT
<i>HC 189</i>	0.5"	19"	14"	4LBS
<i>HC 132</i>	0.5"	19"	24"	8LBS
<i>HC 338</i>	0.5"	25"	24"	10LBS
<i>HC 085</i>	0.5"	28"	14"	5LBS
<i>HC 036</i>	0.5"	28"	24"	10LBS
<i>HC 010</i>	0.5"	34"	14"	8LBS
<i>HC 014</i>	0.5"	34"	24"	15LBS
<i>HC 150</i>	0.5"	48"	14"	12LBS
<i>HC 117</i>	0.5"	48"	24"	20LBS
<i>HC 375</i>	0.5"	54"	24"	20LBS
<i>HC 370</i>	0.5"	66"	24"	20LBS

Closets come with 2 shelves. Upper & lowers come with 1 shelf.
Eighteen inch uppers and corner cabinets do not have shelves.



PULL-OUT SHELVES

PART #	HEIGHT	WIDTH	DEPTH	WEIGHT
<i>HC 346</i>	0.5"	19"	24"	8LBS
<i>HC 342</i>	0.5"	28"	24"	10LBS
<i>HC 343</i>	0.5"	34"	24"	15LBS



SHELF HANGER

PART #	HEIGHT	WIDTH	DEPTH	WEIGHT
<i>HC 033</i>	3"	28"	22"	5LBS
<i>HC 034</i>	3"	34"	22"	5LBS
<i>HC 037</i>	3"	48"	22"	10LBS



HAYLEY TIRE RACKS

PART #	HEIGHT	WIDTH	DEPTH	WEIGHT
<i>TR 4522</i>	20"	45"	22"	40LBS
<i>TR 4822</i>	20"	48"	22"	45LBS
<i>TR 5426</i>	24"	54"	26"	60LBS



HAYLEY FREESTANDING WORKBENCH

PART #	WIDTH	DEPTH	WEIGHT
<i>TR 4820</i>	48"	20"	95LBS
<i>TR 4824</i>	48"	24"	100LBS
<i>TR 6820</i>	68"	20"	130LBS
<i>TR 6824</i>	68"	24"	130LBS

C A B I N E T S
B Y **hayley**

HC
CONFIGURATIONS



CABINETS

STANDARD CONFIGURATIONS

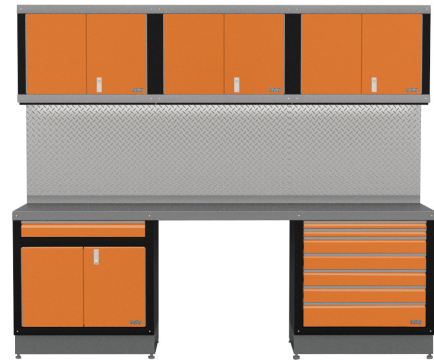
HC CONFIGURATION 1

81" Tall x 68" Wide x 24.5" Deep



HC CONFIGURATION 2

81" Tall x 102" Wide x 24.5" Deep



QUANTITY	PART #	DESCRIPTION
2	HC 243414	med 34" upper
1	HC 303424 D1	34" single drawer
1	HC 30324 D2	34" double drawer
6	CP 24	1/8" alum checker plate <24"
6	HC 098 GA	12 ga galvanized counter /foot
6	HC LED	LED /ft
1	HC LED TX	transformers for LEDs
6	HC 049	base channel /foot

QUANTITY	PART #	DESCRIPTION
3	HC 243414	med 34" upper
1	HC 303424 D1	34" single drawer
1	HC 30324 D7	34" tool chest
9	CP 24	1/8" alum checker plate <24"
9	HC 098 GA	12 ga galvanized counter /foot
9	HC LED	LED /ft
1	HC LED TX	transformers for LEDs
6	HC 049	base channel /foot

CABINETS

STANDARD CONFIGURATIONS

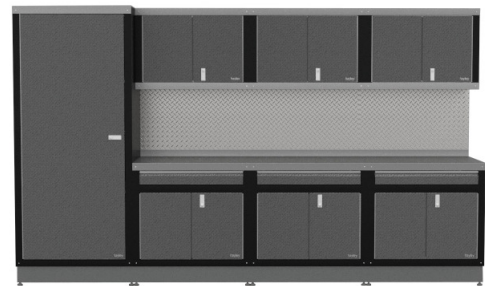
HC CONFIGURATION 3

81" Tall x 102" Wide x 24.5" Deep



HC CONFIGURATION 4

81" Tall x 136" Wide x 24.5" Deep



QUANTITY	PART #	DESCRIPTION
1	HC 753424	34" closet
2	HC 243414	Med 34" Upper
2	HC 30324 D2	34" double drawer
6	CP 24	1/8" alum checker plate <24"
6	HC 098 GA	12 ga galvanized counter /foot
6	HC LED	LED /ft
1	HC LED TX	transformers for LEDs
9	HC 049	base channel /foot

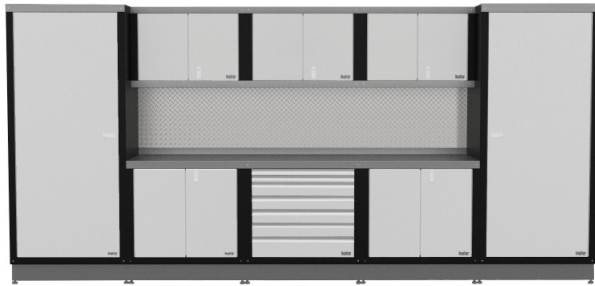
QUANTITY	PART #	DESCRIPTION
1	HC 753424	34" closet
3	HC 243414	Med 34" Upper
3	HC 30324 D1	34" single drawer
9	CP 24	1/8" alum checker plate <24"
9	HC 098 GA	12 ga galvanized counter /foot
9	HC LED	LED /ft
1	HC LED TX	transformers for LEDs
12	HC 049	base channel /foot

CABINETS

STANDARD CONFIGURATIONS

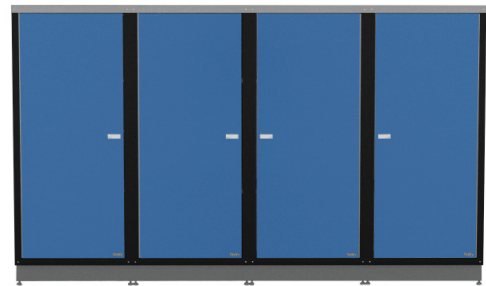
HC CONFIGURATION 5

81" Tall x 170" Wide x 24.5" Deep



HC CONFIGURATION 6

81" Tall x 136" Wide x 24.5" Deep



QUANTITY	PART #	DESCRIPTION
2	HC 753424	34" closet
3	HC 243414	Med 34" upper
2	HC 303424	34" lower
1	HC 303424 D7	34" tool chest
9	CP 24	1/8" alum checker plate <24"
9	HC 098 GA	12 ga galvanized counter /foot
9	HC LED	LED /ft
1	HC LED TX	transformers for LEDs
15	HC 049	base channel /foot

QUANTITY	PART #	DESCRIPTION
4	HC 753424	34" closet
12	HC 049	base channel /foot

CABINETS FREESTANDING CONFIGURATIONS

HC FREE STANDING CONFIGURATION 1

81" Tall x 68" Wide x 24.5" Deep



HC FREE STANDING CONFIGURATION 2

81" Tall x 117" Wide x 24.5" Deep



QUANTITY	PART #	DESCRIPTION
2	HC 243414	Med 34" Upper
2	HC 303424	34" Standard Cabinet
4	HC FSL 24	Single free standing leg 24.5"
2	HC FSP 21	21" Free standing pillar
1	HC FSBS 21 HW	21" Free standing slatwall backsplash
6	HC LED	LED /ft
1	HC LED TX	transformers for LEDs
6	HC 098 GA	12 ga Galvanized counter /foot

QUANTITY	PART #	DESCRIPTION
2	HC 243414	Med 34" Upper
1	HC 303424 D7	34" tool chest
1	HC 303424	34" Standard Cabinet
1	HC 754824	48" Closet Double Door
6	HC FSL 24	Single Free Standing Leg 24.5"
2	HC FSP 21	21" Free Standing Pillar
1	HC FSBS21 CP	21" Free Standing Checker Plate Backsplash
6	HC LED	LED /ft
1	HC LED TX	Transformer for LED
6	HC 098 GA	12 ga Galvanized Counter /foot

CABINETS FREESTANDING CONFIGURATIONS

HC FREE STANDING CONFIGURATION 3

81" Tall x 72" Wide x 24.5" Deep



HC FREE STANDING CONFIGURATION 4

81" Tall x 136" Wide x 24.5" Deep



QUANTITY	PART #	DESCRIPTION
1	HC 243414	Med 34" Upper
2	HC 241914	Med 19" Upper
1	HC 303424 D7	34" Tool Chest
1	HC 301924 GB	19" Single Drawer Garbage Bin
1	HC 301924 PB	19" Parts Bin
6	HC FSL2 4	Single Free Standing Leg 24.5"
2	HC FSP 21	21" Free Standing Pillar
1	HC FSBS 21 HW	21" Free Standing Slatwall Backsplash
6	HC LED	LED /ft
1	HC LED TX	Transformer for LED
6	HC 098 GA	12 ga Galvanized Counter /Foot

QUANTITY	PART #	DESCRIPTION
2	HC 243414	Med 34" Upper
1	HC 303424 D2	34" Double Drawer
1	HC 30324 D7	34" Tool Chest
2	HC 753424	34" CLOset
8	HC FSL 24	Single Free Standing Leg 24.5"
2	HC FSP 21	21" Free Standing Pillar
1	HC FSBS 21 CP	21" Free Standing Checker Plate Backsplash
6	HC LED	LED /ft
1	HC LED TX	Transformer for LED
6	HC 098 GA	12 ga Galvanized Counter /foot

CABINETS FREESTANDING CONFIGURATIONS

HC FREE STANDING CONFIGURATION 5

81" Tall x 232" Wide x 24.5" Deep



HC FREE STANDING CONFIGURATION 4

99" Tall x 232" Wide x 24.5" Deep



QUANTITY	PART #	DESCRIPTION
4	HC 243414	Med 34" Upper
2	HC 303424 D1	34" Single Drawer
2	HC 303424 D2	34" Double Drawer
2	HC 754824	48" Closet Double Door
12	HC FSL 24	Single Free Standing Leg 24.5"
4	HC FSP 21	21" Free Standing Pillar
2	HC FSBS 21 CP	21" Free Standing Checker Plate Backsplash
12	HC LED	LED /ft
1	HC LED TX	Transformer for LEDs
12	HC 098 GA	12 ga Galvanized Counter /Foot

QUANTITY	PART #	DESCRIPTION
2	HC 184824	Small 48" Deep Upper
4	HC 183424	Small 34" Deep Upper
4	HC 243414	Med 34" Upper
2	HC 303424 D1	34" Single Drawer
2	HC 303424 D7	34" Tool Chest
2	HC 754824	48" Double Door Closet
12	HC FSL 24	Single Free Standing Leg 24.5"
4	HC FSP 21	21" Free Standing Pillar
2	HC FSBS 21 CP	21" Free Standing Checker Plate Backsplash
24	HC LED	LED /ft
2	HC LED TX	Transformer for LEDs
12	HC 098 GA	Galvanized Counter

C A B I N E T S
B Y **hayley**

CABINETS BY HAYLEY
7071 112 Ave SE
Calgary, AB, Canada
888-279-4101

WWW.CABINETSBYHAYLEY.COM