

C A B I N E T S B Y **hayley**

Durable Finish

All cabinets are powder coated with a gloss textured finish that resists fingerprints and scuffing.

Strength

Our cabinets are manufactured using 16 gauge high quality Canadian steel for a solid feel and ultimate durability that will last a life time.

Design

Strength and beauty go hand in hand with double sided doors and brushed aluminum accents providing a spectacular appearance and superior performance

Flexibility

Modular cabinets in a variety of widths across two product lines enabling designs to create functional work spaces.

YOUR TOOLS WILL DROOL.

Versatile

We have two lines of cabinets and a variety of specialty products to use your available space efficiently.

Canadian Made



Proudly designed, fabricated, powder coated, and assembled in the heart of the new west, Calgary Alberta, you can be assured that our quality products will stand the test of time.

C A B I N E T S
B Y

hayley

7/21/15

Cabinet Colours



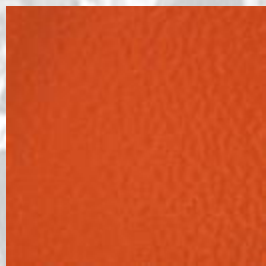
Burnout Black



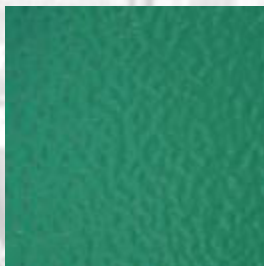
Racing Red



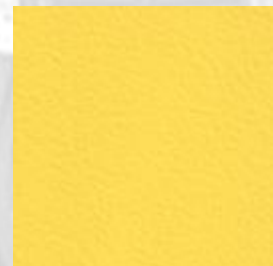
Engine Block Blue



Chopper Orange



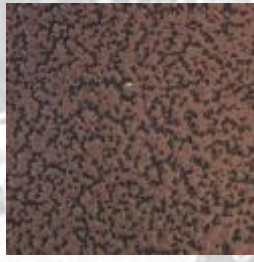
Rider Green



Center line Yellow



Silver Vein



Copper Vein



Smoke Show White

Countertop Material



Galvanized Metal



Powder Coated
Silver Vein



C A B I N E T S
B Y **hayley**



HR SERIES

CABINETS BY hayley

7/21/15

Hayley Rack Units



HR 1

Part #	Height	Width	Depth	Weight
HR 01-18	84"	36"	18"	170 lbs
HR 01-24	84"	36"	24"	180 lbs

HR-1 Parts	
84" Gable	2
Shelves	5



HR 2

Part #	Height	Width	Depth	Weight
HR 02-18	84"	36"	18"	266 lbs
HR 02-24	84"	36"	24"	276 lbs

HR-2 Parts	
84" Gable	2
Shelves	5
78" Doors	2



HR 3

Part #	Height	Width	Depth	Weight
HR 03-18	84"	36"	18"	300 lbs
HR 03-24	84"	36"	24"	340 lbs

HR-3 Parts	
84" Gable	2
Shelves	5
54" Doors	2
24" Doors	2

CABINETS BY hayley

7/21/15



HR 4 B

Part #	Height	Width	Depth	Weight
HR 04-18 B	84"	36"	18"	355 lbs
HR 04-24 B	84"	36"	24"	375 lbs

HR-13 Parts	
84" Gable	2
Shelves	6
54" Doors	2
6" Drawer	2
12" Drawer	1



HR 7

Part #	Height	Width	Depth	Weight
HR 07-18	84"	36"	18"	355 lbs
HR 07-24	84"	36"	24"	375 lbs

HR-7 Parts	
84" Gable	2
Shelves	4
24" Doors	2
6" Drawer	7
12" Drawer	1



HR 9

Part #	Height	Width	Depth	Weight
HR 09-18	36"	36"	18"	185 lbs
HR 09-24	36"	36"	24"	195 lbs

HR-9 Parts	
36" Gable	2
Shelves	3
6" Drawer	1
24" Doors	2
Door Stop	1
Countertop	1

CABINETS BY hayley

7/21/15



HR 10

Part #	Height	Width	Depth	Weight
HR 10-18	36"	36"	18"	170 lbs
HR 10-24	36"	36"	24"	180 lbs

HR-10 Parts	
36" Gable	2
Shelves	3
30" Doors	2
Countertop	1



HR 11

Part #	Height	Width	Depth	Weight
HR 11-18 D3	36"	36"	18"	185 lbs
HR 11-24 D3	36"	36"	24"	215 lbs
HR 11-18 D4	36"	36"	18"	200 lbs
HR 11-24 D4	36"	36"	24"	230 lbs
HR 11-18 D5	36"	36"	18"	215 lbs
HR 11-24 D5	36"	36"	24"	245 lbs

HR-11 D3 Parts	
36" Gable	2
Shelves	2
6" Drawer	1
12" Drawer	2
Countertop	1

HR-11 D4 Parts	
36" Gable	2
Shelves	2
6" Drawer	3
12" Drawer	1
Countertop	1

HR-11 D5 Parts	
36" Gable	2
Shelves	2
6" Drawer	5
Countertop	1



HR 12

Part #	Height	Width	Depth	Weight
HR 12-18	24"	36"	18"	185 lbs
HR 12-18 B	24"	36"	18"	220 lbs

HR-12 Parts	
24" Gable	2
Shelves	3
24" Doors	2

HR-12 B Parts	
One Piece Box	1
Shelves	3
24" Doors	2

CABINETS BY hayley

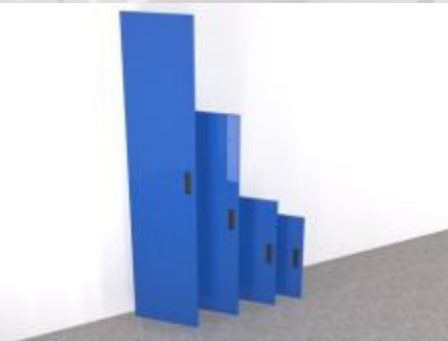
7/21/15

Hayley Rack



HR Gables

Part #	Height	Width	Depth	Weight
HR 001	36"	1.5"	18"	15 lbs
HR 002	60"	1.5"	18"	25 lbs
HR 003	84"	1.5"	18"	35 lbs
HR 024	30"	1.5"	24"	20 lbs
HR 037	60"	1.5"	24"	30 lbs
HR 030	84"	1.5"	24"	50 lbs
HR 036	24"	1.5"	18"	10 lbs



HR Doors

Part #	Height	Width	Depth	Weight
HR 004	24"	18"	0.5"	15 lbs
HR 005	30"	18"	0.5"	20 lbs
HR 006	54"	18"	0.5"	30 lbs
HR 007	78"	18"	0.5"	48 lbs



HR Drawers

Part #	Height	Width	Depth	Weight
HR 008	6"	36"	18"	25 lbs
HR 009	12"	36"	18"	35 lbs



CABINETS BY hayley

7/21/15

HR Shelves



Part #	Height	Width	Depth	Weight
HR 010	0.5"	36"	18"	15 lbs
HR 023	0.5"	36"	24"	20 lbs
HR 018	0.5"	18"	18"	10 lbs
HR 033	0.5"	18"	24"	12 lbs

HR Counter Tops

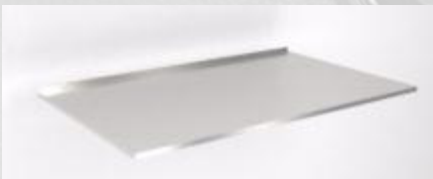


HR 022	1.5"	36"	19"	30 lbs
HR 014	1.5"	72"	19"	60 lbs
HR 038	1.5"	108"	19"	90 lbs

HR 039	1.5"	36"	24"	40 lbs
HR 040	1.5"	72"	24"	80 lbs
HR 141	1.5"	108"	24"	120 lbs

HR 042*	1.5"	96"	24"	110 lbs
HR 043**	1.5"	96"	24"	110 lbs

HR Corner Counter Tops



Part #	Height	Width	Depth	Weight
HR 042*	1.5"	96"	24"	110 lbs
HR 043**	1.5"	96"	24"	110 lbs

Note: All HR counter tops come c/w plywood

* Closed / Splash (Left hand)

** Splash / Closed (Right hand)

HR Corner Joiner



Part #	Height	Width	Depth	Weight
HR 044	36"	3"	3"	10 lbs

HR Door Stop



Part #	Height	Width	Depth	Weight
HR 017	1"	36"	1.5"	3 lbs

C A B I N E T S
B Y **hayley**



HR CONFIGURATIONS

7/21/15

HR Configuration #1



#	Part #	Description 18" Deep
2	HR 9-18	36" Single Drawer
2	HR 12-18	36" Upper
1	HR 014	72" Counter Top
6	CP 24	Checker Plate < 24"

#	Part #	Description 24" Deep
2	HR 9-24	36" Single Drawer
2	HR 12-18	36" Upper
1	HR 040	72" Counter Top
6	CP 24	Checker Plate < 24"

HR Configuration #2



#	Part #	Description 18" Deep
2	HR 9-18	36" Single Drawer
3	HR 12-18	36" Upper
1	HR 038	108" Counter Top
9	CP 24	Checker Plate < 24"

#	Part #	Description 24" Deep
2	HR 9-24	36" Single Drawer
3	HR 12-18	36" Upper
1	HR 141	108" Counter Top
9	CP 24	Checker Plate < 24"

HR Configuration #3



#	Part #	Description 18" Deep
1	HR 9-18	36" Single Drawer
1	HR 11-18	36" 4 Drawer Tool Chest
3	HR 12-18	36" Upper
1	HR 038	108" Counter Top
9	CP 24	Checker Plate < 24"

#	Part #	Description 24" Deep
1	HR 9-24	36" Single Drawer
1	HR 11-24	36" 4 Drawer Tool Chest
3	HR 12	36" Upper
1	HR 141	108" Counter Top
9	CP 24	Checker Plate < 24"

7/21/15

HR Configuration #4



#	Part #	Description 18" Deep
1	HR 2	36" Closet
2	HR 9	36" Single Drawer
2	HR 12	36" Upper
1	HR 014	72" Counter Top
6	CP 24	Checker Plate < 24"

#	Part #	Description 24" Deep
1	HR 2-24	36" Closet
2	HR 9-24	36" Single Drawer
2	HR 12	36" Upper
1	HR 040	72" Counter Top
6	CP 24	Checker Plate < 24"

HR Configuration #5



#	Part #	Description 18" Deep
1	HR 2	36" Closet
1	HR 9	36" Single Drawer
1	HR 11	36" 4 Drawer Tool Chest
2	HR 12	36" Upper
1	HR 014	72" Counter Top
6	CP 24	Checker Plate < 24"

#	Part #	Description 24" Deep
1	HR 2-24	36" Closet
1	HR 9-24	36" Single Drawer
1	HR 11-24	36" 4 Drawer Tool Chest
2	HR 12	36" Upper
1	HR 040	72" Counter Top
6	CP 24	Checker Plate < 24"

HR Configuration #6



#	Part #	Description 18" Deep
1	HR 2	36" Closet
3	HR 9	36" Single Drawer
3	HR 12	36" Upper
1	HR 038	108" Counter Top
9	CP 24	Checker Plate < 24"

#	Part #	Description 24" Deep
1	HR 2-24	36" Closet
3	HR 9-24	36" Single Drawer
3	HR 12	36" Upper
1	HR 141	108" Counter Top
9	CP 24	Checker Plate < 24"

7/21/15

HR Configuration #7



#	Part #	Description 18" Deep
2	HR 10	36" Lower
2	HR 9	36" Single Drawer
4	HR 12	36" Upper
2	HR 014	72" Counter Top
12	CP 24	Checker Plate < 24"

#	Part #	Description 24" Deep
2	HR 10-24	36" Lower
2	HR 9-24	36" Single Drawer
4	HR 12	36" Upper
2	HR 040	72" Counter Top
12	CP 24	Checker Plate < 24"

HR Configuration #8



#	Part #	Description 18" Deep
4	HR 9	36" Single Drawer
4	HR 12	36" Upper
2	HR 014	72" Counter Top
12	CP 24	Checker Plate < 24"

#	Part #	Description 24" Deep
2	HR 9-24	36" Single Drawer
4	HR 12	36" Upper
2	HR 040	72" Counter Top
12	CP 24	Checker Plate < 24"

HR Configuration #9



#	Part #	Description 18" Deep
2	HR 2	36" Closet
2	HR 9	36" 4 Drawer Tool Chest
1	HR 11	36" Tool Cabinet
3	HR 12	36" Upper
1	HR 038	108" Counter Top
9	CP 24	Checker Plate < 24"

#	Part #	Description 24" Deep
2	HR 2-24	36" Closet
2	HR 9-24	36" Single Drawer
1	HR 11-24	36" 4 Drawer Tool Chest
3	HR 12	36" Upper
1	HR 141	108" Counter Top
9	CP 24	Checker Plate < 24"

7/21/15

HR Configuration #10



#	Part #	Description 18" Deep
2	HR 9	36" Single Drawer
2	HR 12	36" Upper
1	HR 014	72" Counter Top
6	CP 24	Checker Plate < 24"

#	Part #	Description 24" Deep
2	HR 9-24	36" Single Drawer
2	HR 12	36" Upper
1	HR 040	72" Counter Top
6	CP 24	Checker Plate < 24"

HR Configuration #11



#	Part #	Description 18" Deep
2	HR 2	36" Closet
1	HR 9	36" Single Drawer
1	HR 11	36" 4 Drawer Tool Chest
2	HR 12	36" Upper
1	HR 014	72" Counter Top
6	CP 24	Checker Plate < 24"

#	Part #	Description 24" Deep
2	HR 2-24	36" Closet
1	HR 9-24	36" Single Drawer
1	HR 11-24	36" 4 Drawer Tool Chest
2	HR 12	36" Upper
1	HR 040	72" Counter Top
6	CP 24	Checker Plate < 24"

HR Configuration #12



#	Part #	Description 18" Deep
4	HR 2	36" Closet

#	Part #	Description 24" Deep
4	HR 2-24	36" Closet